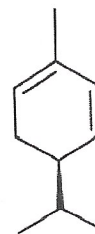




INDOFINE Chemical Company, Inc.

121 Stryker Lane, Bldg. 30
Hillsborough, NJ 08844 USA
Phone: (908) 359-6778; Fax: (908) 359-1179



Certificate Of Analysis

025411S **R-(-)-alpha-PHELLANDRENE** **Lot No.: 21092124**

IDENTIFICATION

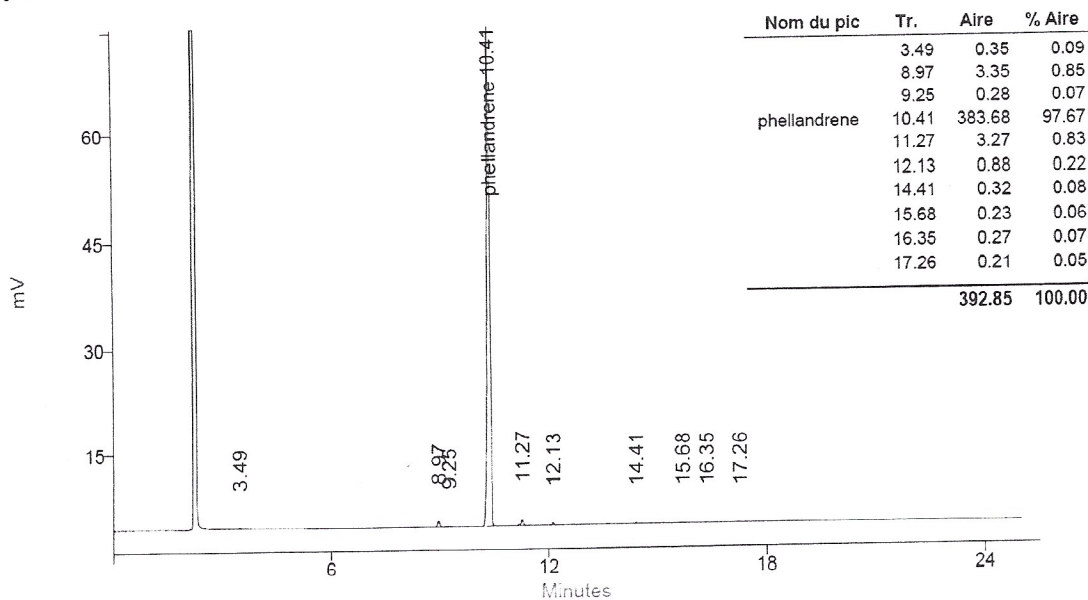
CAS Number	[4221-98-1]
Molecular formula	C ₁₀ H ₁₆
Molecular weight	136,24

ANALYSIS

TEST	SPECIFICATION (June 2016, version 10)	RESULT
Appearance	Liquid	Conform
[α] _D	-(230 ± 10)° c=0.5 in diethylether	-230°
Moisture		< 0.2 %
Assay (GC)*	≥95% (sum of enantiomers)	Conform

GC

Column DB5 capillary 30m x 0.32 mm x 0.25 μm
 Temperature Column 70 (10 min) to 220°C (10°C/min)
 Injector 200°C, Detector 230°C
 Detector FID
 Carrier gas Helium 1 ml/min
 Sample solvent Isopropanol



Contains 1000ppm BHT as inhibitor

The values given on the 'Certificate of Analysis' are the results determined at the time of analysis

Storage
Transport conditions

Flammable. Store at <-15°C. UNSTABLE
Ambient temperature